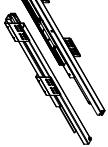


Special Features:

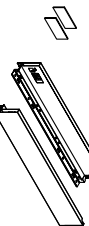
- Length:270,300,350,400,450,500,550mm.
- The drawer side-board is 88mm high.
- Drawer width can be designed freely with automatic error adjustment.
- Hidden full pulout silencing sliding slid can bear 40kg and enjoys
- excellent stability and quiet and smooth sliding performance.
- Quick installation and dismantle.
- Newly-designed built-in damper is free from reinstallation and ensures soft and smooth drawer movements.

Basic length	Internally usable drawer depth	Minimum installation depth of drawer	Minimum installation height
300mm	274mm	300mm	110mm
350mm	324mm	350mm	110mm
400mm	374mm	400mm	110mm
450mm	424mm	450mm	110mm
500mm	474mm	500mm	110mm
550mm	524mm	550mm	110mm

1. Guide Left/Right Length: 300mm, 350mm, 400mm, 450mm, 500mm, 550mm



2.Drawer Side & Decorative Cap Left/Right Length: 300mm, 350mm, 400mm, 450mm, 500mm, 550mm



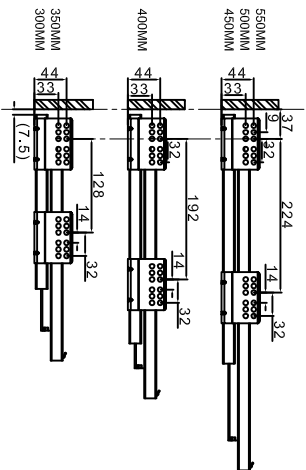
3.Back connector Left / Right



4.Front connector Left / Right

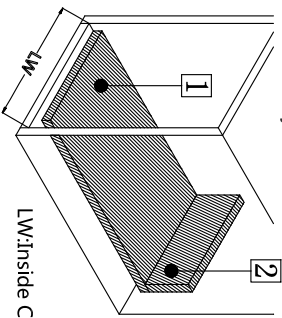


Runner Installation(mm)



Basic length:300/350/400/450/500/550

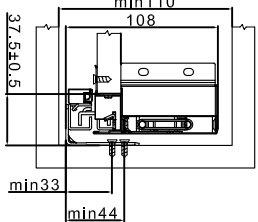
Technology pivot:
Bottom and Back Panel Measurement
16MM Density Panel



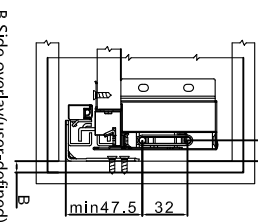
- 1 Bottom panel width=Inside Cabinet Width-75±0.5
 - 2 Back panel height= 68MM
- Back panel width=Inside Cabinet Width-87±0.5



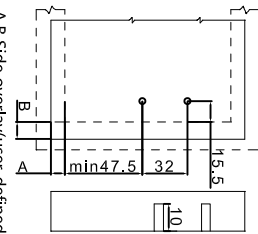
Inside Cabinet Dimension



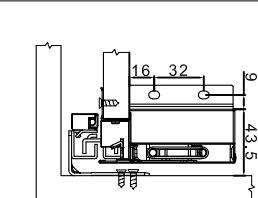
Front Panel Mounting Positions



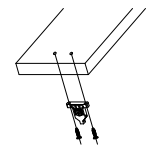
Front Fixing Brackets Positions



Back Panel Mounting Positions

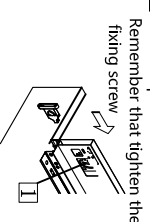


Front fixing brackets mounting



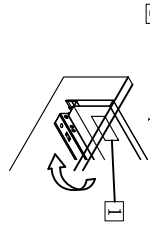
Front panel height adjustment : ±2mm

Front Panel Mounting Positions



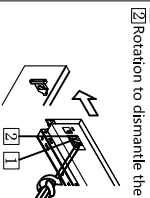
Front panel side adjustment : right/mm

Front panel removing

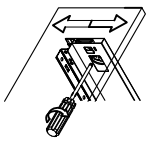


Front panel side adjustment : left/mm

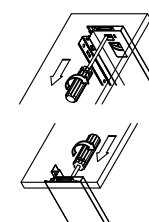
Back Panel Mounting Positions



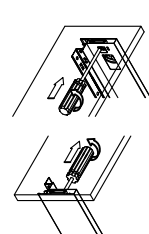
Mounting the drawer



Front Panel Mounting Positions



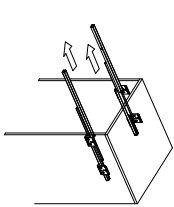
Front Panel Mounting Positions



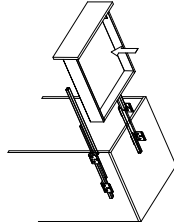
Back Panel Mounting Positions



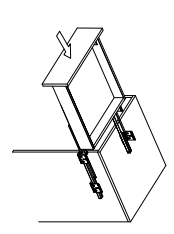
Installing the drawer



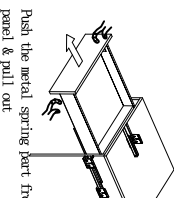
Front Panel Mounting Positions



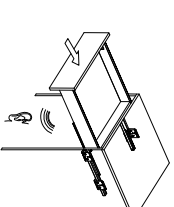
Front Panel Mounting Positions



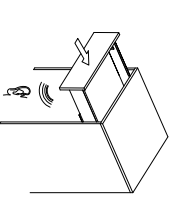
Removing the drawer



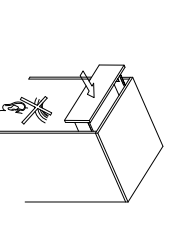
Function of the damper



Front Panel Mounting Positions



Front Panel Mounting Positions



Back Panel Mounting Positions

